

Bound Buttonhole Basics



1. Interface the fabric on the wrong side, along the area for the buttonholes

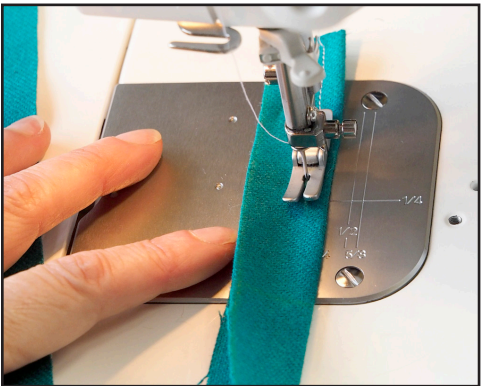
2. Cut a strip of fabric on straight of grain, for the buttonhole welts, much wider than you need. (For a 1/4" welt cut the strip 1 3/4" wide, cut on straight of the grain.) The length is determined by the number of buttonholes (see step 8) but make it 2 to 3 inches longer than you need. Interface welt if needed.



3. Thread trace the buttonholes using machine basting stitch with contrasting thread. First stitch a line for outside end of buttonhole. Second stitch a line at the other end of buttonhole.



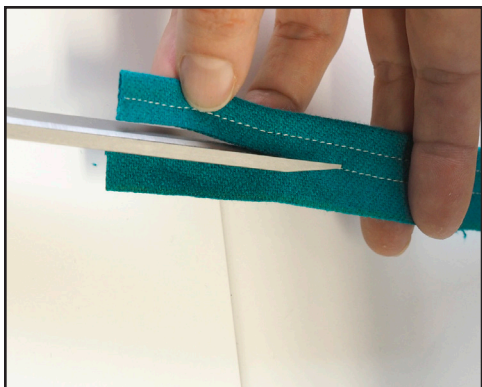
4. Stitch a horizontal line where the center of each buttonhole will be; clip threads.



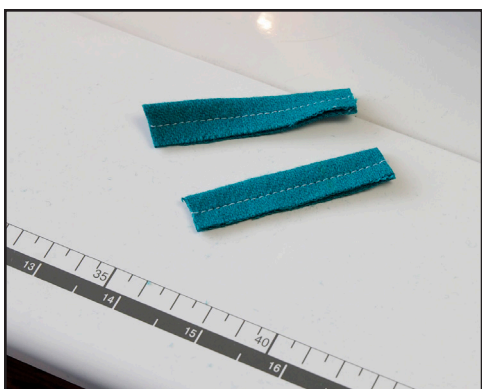
5. Press strip for welts in half lengthwise. Using 2.5 stitch length, stitch 1/4" from fold.



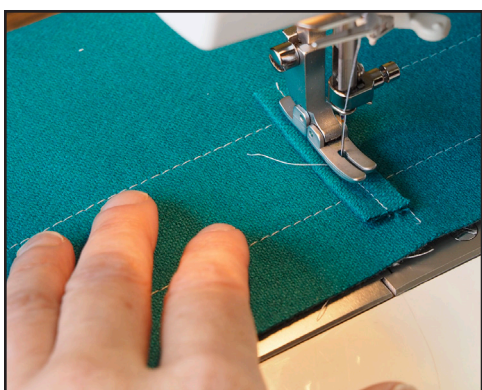
6. Stitch 1/2" from fold.



7. Cut along second row of stitching to create the exact width needed for the welts.



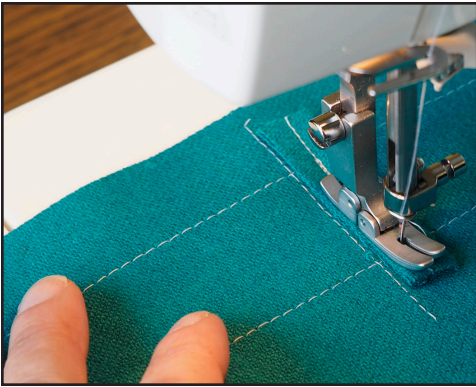
8. Make welts 1" longer than buttonhole (for 1¼" buttonhole cut welts 2¼"). Cut out any imperfections then cut the number of welts needed plus extras, just in case.



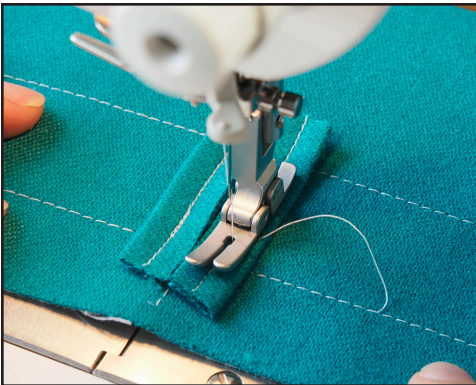
9. Set machine at 2.0 stitch length. Center first welt right at the horizontal stitching line. Sink needle near center of the welt, and stitch precisely up to the ladder line.



10. With needle down, pick-up foot, turn the fabric at a right angle to check if the stitching stopped exactly at the end of the buttonhole tracing thread line.



11. Turn to Stitch right on previous stitching to the other end stop and repeat as before. Turn around and go back a few stitches toward center.



12. Repeat with second welt. Press.



13. Look at the wrong side of buttonhole to be sure you were truly accurate stopping and starting precisely at the thread tracing stitches.



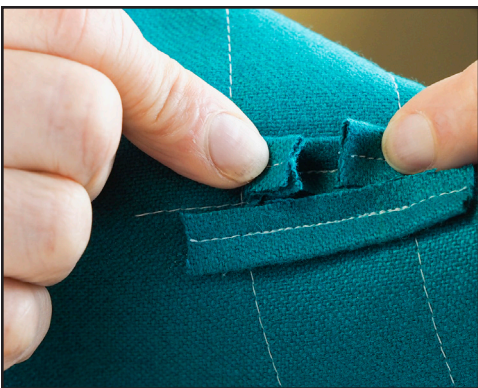
14. Clip a small hole in center of horizontal thread tracing.



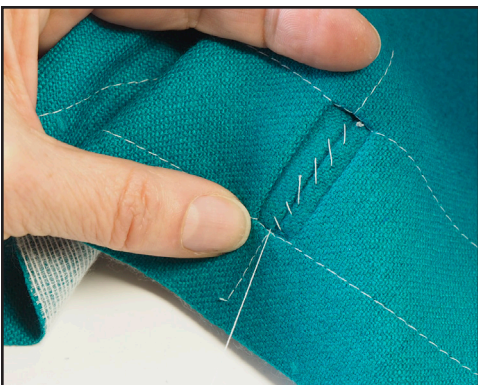
15. Being careful not to cut through welts, cut at a slant directly toward each of the four corners, stopping exactly at the end of stitching.



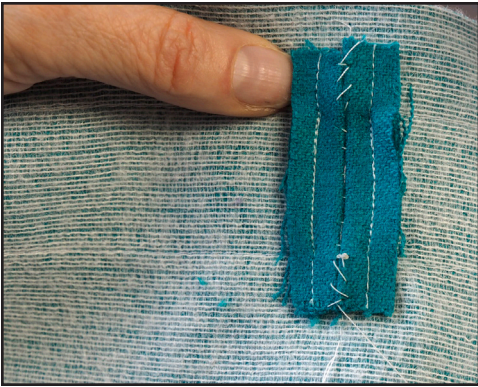
16. Do not stop short!



17. Turn welts to wrong side by folding ends in first and gently pushing through to wrong side.



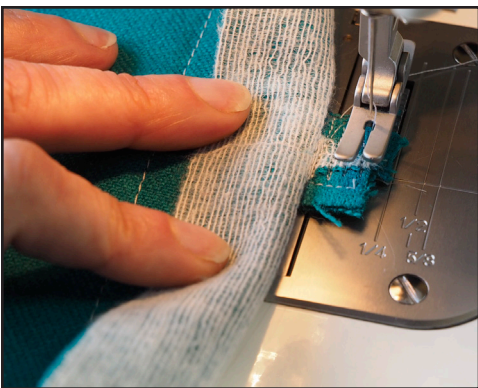
18. Look at the right side to confirm the buttonhole is square at each end. Baste with slant stitch.



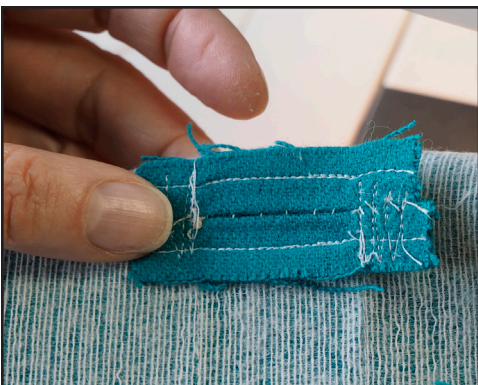
19. Turn to wrong side, stitch welts together at both ends, Press from wrong side.



20. Right side up, fold back fabric to reveal end of buttonhole. Stitch across the base of the triangle exactly on the thread tracing stitches. You are stitching the triangle to the welts.



21. Stitch in reverse, pivoting at a slight angle away from the buttonhole.



22. Then stitch forward, continuing to stitch away from the buttonhole to create a darning effect.



ISLANDER Sewing Systems™

Congratulations! You have learned another amazing sewing technique from Islander Sewing Systems™.



Information in this download is derived from the "Galaxy of Sewing" DVD series from IslanderSewing.com and is thus copyrighted material.

For further instruction and access to other fine sewing techniques, visit our website at www.IslanderSewing.com